

# Neighbourhood Development Plan Local Events

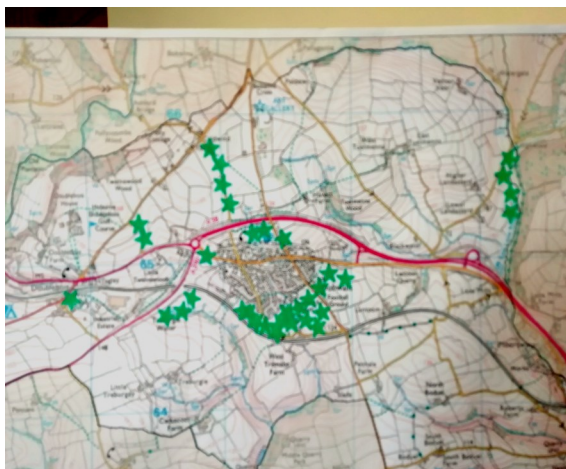
The exhibition, of 'NDP Policy proposals and Potential Parish Projects for the future' attracted a good number of local residents at each of the three venues of Dobwalls, Doublebois and Trewidland.

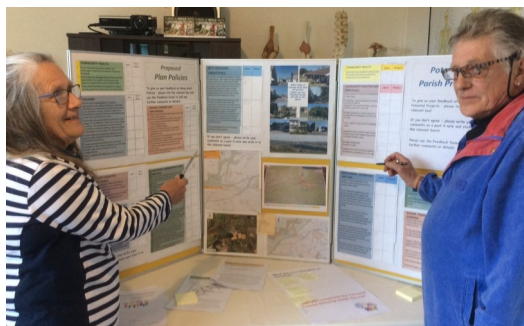
Many of those visiting took advantage of the opportunities to show



their agreement/or not for each of the policies on display, and many also took the time to write their own comments and fill in the feedback forms which were available. There was considerable interest in the Housing and Greenspace Strategy tables at the Dobwalls event, with several local people offering to join the recently convened Greenspace Strategy group.

The current draft of the Landscape Character Statement was also on display, and everyone was asked to indicate the areas of the parish that they considered of particular landscape value with green stars. The resulting maps that have emerged will give the LCS team very valuable information to complete this study, with Cornwall Council officers.





The event in **Doublebois**, kindly hosted by Tug Wilson in his cabin on the Horborne Holiday site, was also well attended and it was interesting to see that the agree and disagree boxes ticked here did not necessarily match up with those from Dobwalls!

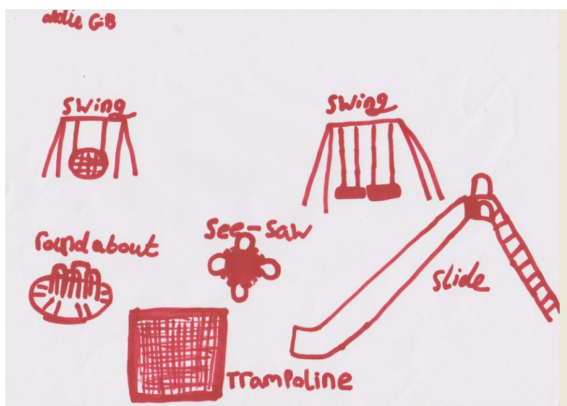
Many lively discussions took place over the morning, and again we had many helpful issues raised in feedback and several people who are interested in joining the Steering group/ Greenspace strategy group to help move forward with the current Landscape / Play areas / walking routes and dog walking area debates and proposals.



Volunteers from the Steering group were very encouraged to have feedback on how visitors felt the NP process is developing with visitors commenting on the amount of work that was being undertaken by the NP group, and thanking the team for their efforts. Visitors commented that much of the work over the past year had been invisible till these events, but that the range of research and deliberation that had been going on was now very useful for seeing the direction of the Neighbourhood Plan project.

## Proposed Policies and potential projects

Suggestions for the development and upgrading of Play spaces in both Dobwalls and Doublebois raised several discussions, and one of our younger visitors drew a picture of what she would like to see in her ideal play space. While the parish projects will not be part of the NP Policies, they will provide the Parish Council with a clear set of priorities for future fundraising and community projects.



## Trewidland Local NP Event

What the morning lacked in Quantity—with only eight attendees—it more than benefited from in terms of the quality and detail of the responses and comments made.

Once again it was a great opportunity to receive detailed local knowledge about key aspects of the built and natural environment of the area and to get a sense of both the agreement and differences in preferences between the three communities.

Visitors spent time going through the tick box sheets on the Policies and Projects and on identifying the areas of the parish which they thought to be of particular importance in relation to the Landscape character study.

We have now analysed the results of the exercise to help us to identify which Policies and Projects have most support and how the written feedback will moderate and/or add to the detailed policies that we

are now writing.

This has been a great help with refining the developing Policies which will become part of the final Plan document.

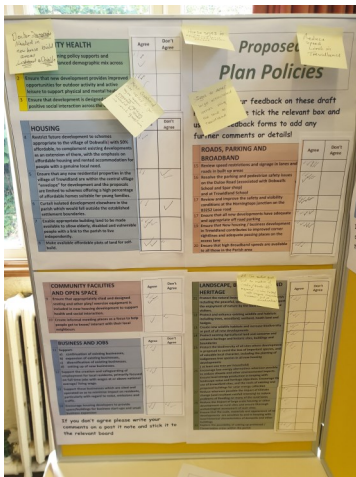


## What happens next ?

We hope to have the first full draft of the Neighbourhood Plan Document available for consultation with local people and with Cornwall Council by April/May 2020.

This should allow us to move towards a Referendum on the Plan for all

on the parish electoral roll by December 2020.



Oct 19 local events feedback	Dobwalls	Doublebois	Trewidland	All
Policy	Agree	Don't Agree	Agree	Don't Agree
<b>COMMUNITY HEALTH</b>				
1. Ensure that planning policy supports and encourages a balanced demographic mix across the parish.	15		6	25
2. Ensure that new development provides improved opportunities for outdoor activity and active leisure to support physical and mental health.	15		7	26
3. Ensure that development is designed to support positive social interaction across the community.	15		7	26
<b>HOUSING</b>				
4. Restrict future development to schemes appropriate to the village of Dobwalls, with 50% affordable, to complement existing developments as an extension of them, with the emphasis on affordable housing and rented accommodation for people with a genuine local need.	13	1	3	18
5. Ensure that any new residential properties in the village of Trewidland are within the central village "envelope" for development and the proposals are limited to schemes offering a high percentage of affordable homes suitable for young families.	8		3	13
6. Control second development elsewhere in the parish which would fall outside the established settlement boundaries.	9		5	16
7. Enable appropriate building land to be made available to allow elderly, disabled and vulnerable people with a link to the parish to live independently.	8		4	17
8. Make available affordable plots of land for self-build.	9	1	3	14



## NDP Greenspace Strategy group

The many comments on the need for good play areas for a range of children's age groups—for places for older people in the community to rest and chat, and for dog walkers to take exercise with their dogs has raised the issue of how we can best improve and manage our green spaces in each of the parish communities.

A group who have interests in exploring possible options for the future has now been set up as part of the Neighbourhood Development Plan Parish projects process, and we have had several parish residents volunteering to contribute to this discussion and to focus on improving walking and other health related opportunities.

If you would like to be a part of this discussion (which is only just beginning) please contact Mhairi Mackie at [mhairimackie@waitrose.com](mailto:mhairimackie@waitrose.com) or Sandy Simmons at [aarongypsymoon@btinternet.com](mailto:aarongypsymoon@btinternet.com)

